

SYMMETRY™ VIDEO MANAGEMENT

Symmetry Video Management is an innovative open video management platform for both analog and digital video. The platform supports the migration from analog to digital for any size organization.

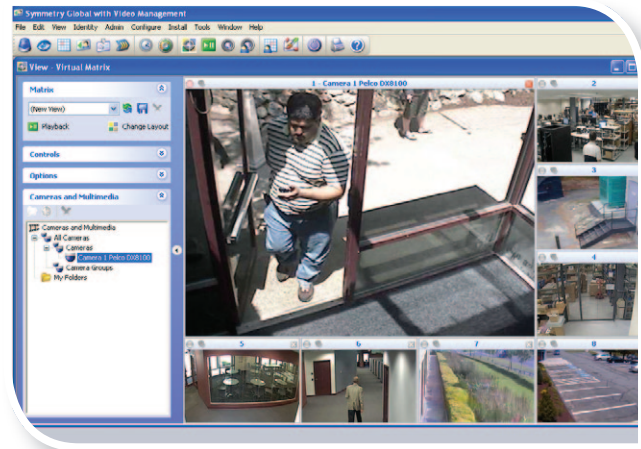
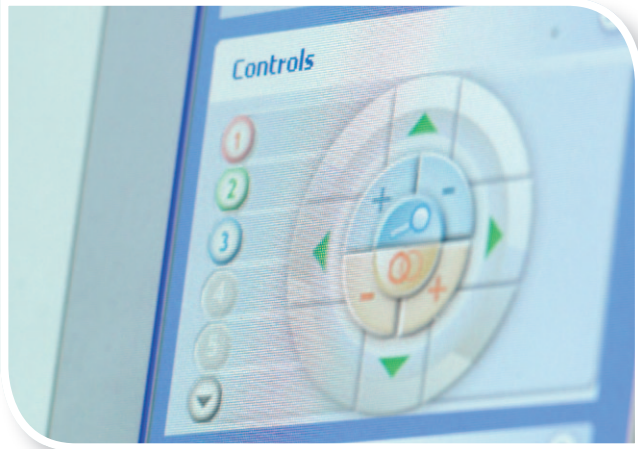
Support is provided for video from market leading digital video recorders, IP cameras and Symmetry Edge Network Video Servers (ENVS®) which can also provide peer to peer integration with multiNODE access control panels.

The Symmetry system provides a complete solution including powerful options for live video management and the centralized NVR storage of video from the Symmetry ENVS and MPEG-4 and H.264 network cameras.

Symmetry Video Management can expand the scope of the security management system into a truly seamless solution for access control, intrusion, identity management, biometrics and video.

KEY FEATURES

- Open Architecture Video Management solution for Symmetry ENVS, market leading DVR and network cameras
- Live video review of up to 72 concurrent cameras per client PC
- Managed, indexed storage of MPEG-4 and H.264 video from the Symmetry ENVS and network cameras
- Event tagging integrated with Intrusion and Access Control
- Alarms Management including video loss alarms
- Graphical Maps with interactive video control
- Review stored video from DVR, network camera archive and video server storage on Symmetry NVR
- Instant-replay of recently recorded video
- Record Now feature allows guards to initiate recording
- Flexible on Event presentation of video
- Motion detection supported as standard
- Integrated HTML Web Page support in virtual matrix
- Operator permissions for individual cameras and stored views
- Automated sequencing facility
- Supports Pan Tilt Zoom and camera control
- Management Reports
- Export video to CD or DVD for archiving
- Still image capture and export from MPEG-4 and H.264 video
- Graphical time and calendar based configuration on frame rate, resolution, presets and other features
- Multi-user system for up to nine multiple PCs
- Multiple Client Monitor Support
- Activity logging and audit trail of configuration changes and operator activity
- Multi-company partitioning
- Seamless integration with all other modules of the security management system



SPECIFICATIONS

Computer Requirements:

- Client PC and Server specifications requirements depend on number of cameras to be viewed or recorded. Please see Video Design Guide for details.
- Server specification depends on number of cameras. Refer to the video design guide.

Storage:

DVR data remains on the DVR; Symmetry ENVS and selected MPEG-4 and H.264 cameras archive to open selection of hard drives, storage arrays, Network Attached Storage or Hierarchical Storage Management solutions.

VIDEO HARDWARE SUPPORT

Digital Video Encoders:

- Symmetry Edge Network Video Servers (ENVS)

Digital Video Recorders:

Models from the following market leading manufacturers:

- Bosch Divar
- Dedicated Micros
- OnSSI
- Milestone
- Nice
- Pelco
- Verint

Network Cameras:

Selected H.264 and MPEG-4 cameras:

- Arecont
- AXIS
- Bosch
- Sony
- Panasonic

ORDERING INFORMATION

- Requires Symmetry Professional or Symmetry Enterprise v6.0 or later pre-installed
- Symmetry client licenses allow full video operation. Additional client licenses available
- Available with 4, 8, 16, 32, 128 or 256 camera licenses to suit requirements
- NVR storage module available for recording of data from Symmetry ENVS or MPEG-4 IP cameras

PURCHASING INFORMATION

- VID-VMS-V6.2
- VID-MOD-V6.2
- VID-NVR-V6.2
- VID-CAM-004-V6.2
- VID-CAM-008-V6.2
- VID-CAM-016-V6.2
- VID-CAM-032-V6.2
- VID-CAM-064-V6.2
- VID-CAM-128-V6.2



AMAG Technology

sales@amag.com

www.amag.com